

Original BMW Accessory. Installation Instructions.



iPod Interface Retrofit BMW X5 (E70)

These installation instructions are only valid for cars without SA 672 (CD changer).

Retrofit kit No. 65 41 0 412 881 iPod interface retrofit kit

Installation time

The installation time is **approx. 1.0 hours**. This may vary depending on the condition of the car and the equipment in it.

In general the car must be upgraded to the latest I stage status by “flashing” before starting the work. Depending on the production age of the car and the work already carried out on the car, the programming times will vary, which means that we cannot quote a specific time at this point. The installation time does not include any time for programming/encoding, as this depends on the age of the car and the equipment in it.

Important information

These installation instructions are primarily designed for use within the BMW dealership organization and by authorized BMW service companies.

In any event, the target group for these installation instructions is specialist personnel trained on BMW cars with the appropriate specialist knowledge.

All work must be completed using the latest BMW repair manuals, circuit diagrams, servicing manuals and work instructions in a rational order using the prescribed tools (special tools) and observing current health and safety regulations.

In the event of any installation or function problems, restrict the troubleshooting session to about 0.5 hours for mechanical work or 1 hour for electrical work.

In order to reduce costs and avoid any additional expense, send a query immediately to the Technical Parts Support via the Aftersales Assistance Portal (ASAP).

Specify the following information:

- Chassis number
- Part number of the retrofit kit
- A precise description of the problem
- Work steps already carried out

Do not archive the hard copy of these installation instructions since daily updates are made by ASAP!

Pictograms



Denotes instructions that draw your attention to special features.



Denotes the end of the instruction or other text.

Installation information

All pictures show LHD cars; proceed accordingly on RHD cars.

Ensure that the cables/lines are not kinked or damaged as you install them in the car.

The costs thereby incurred will not be reimbursed by BMW AG.

Additional cables/lines that you install must be secured with cable ties.

If the specified PIN chambers are occupied, bridges, double crimps or twin-lead terminals must be used.

After the installation work the retrofit must be programmed / coded using SSS (software service station) via the **Retrofit** path.

When routing fibre optic cables, make sure the bending radius is no less than 25 mm.

Ordering instructions

The CD changer holder **O and fillister head screws** P are not supplied with the retrofit kit and must be ordered separately (see EPC for part number and further details).

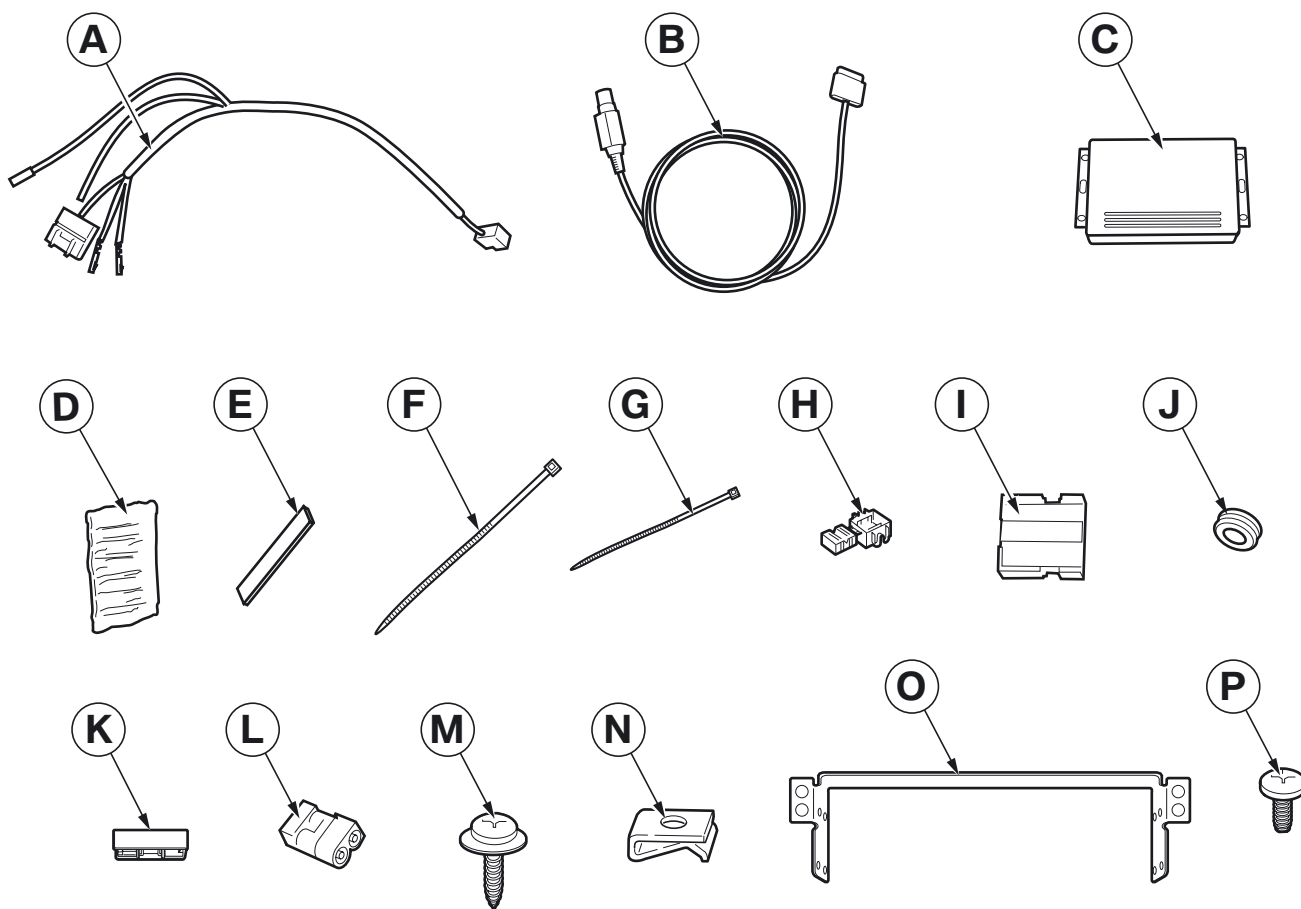
Special tools required

00 9 317, Trim wedge

Contents

Section	Page
1. Parts list	4
2. Preparatory work	5
3. Connection diagram	6
4. Installation and cabling diagram.....	7
5. Connecting the wiring harness	8
6. Installing the connection cable	10
7. Installing and connecting the interface	11
8. Concluding work and coding	12
9. Circuit diagram	13

1. Parts list



070 0354 Z

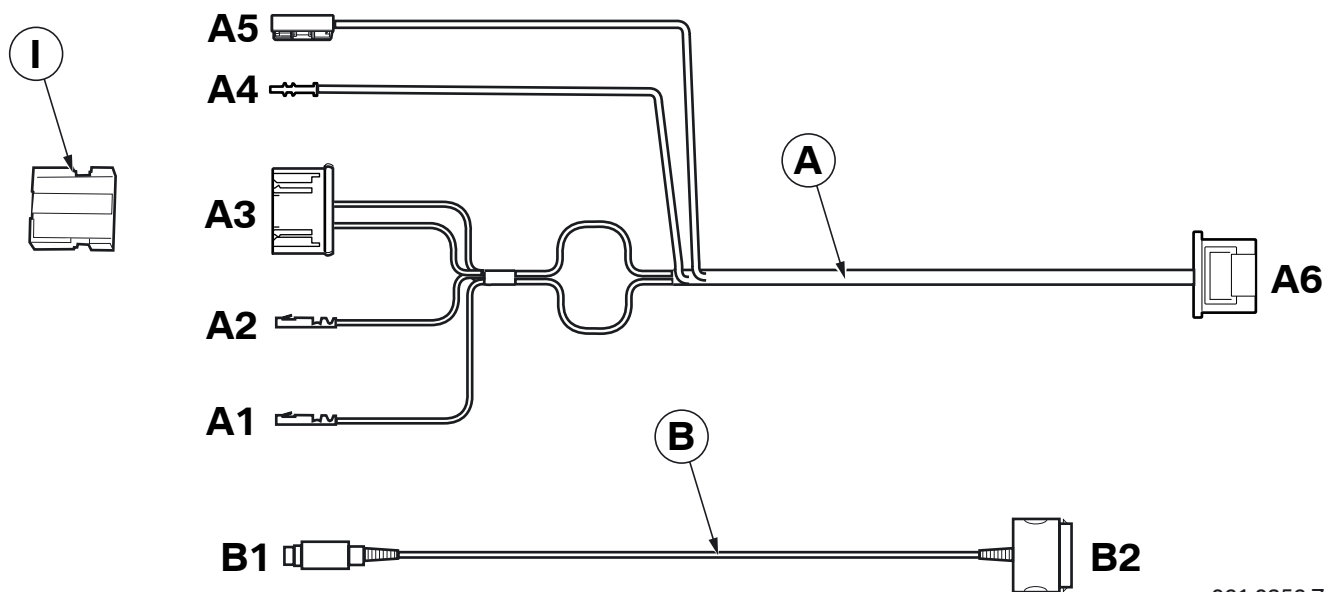
Legend

- A** Cable kit
- B** iPod connection cable
- C** Interface
- D** Felt (4 pieces, not required)
- E** Sealing strip (4x, not required)
- F** Cable tie 445 x 4.8 mm (2x, not required)
- G** Cable tie 200 x 3.6 mm (10x)
- H** Miniature connector (2x, not required)
- I** Black 4-pin socket casing
- J** Grommet
- K** Fibre optic cable connector (not required)
- L** Fibre optic cable connector (not required)
- M** Self-tapping screw 4.8 x 16 mm (2x)
- N** Speed nut (2x)
- O** Holder for CD changer (not supplied with the retrofit kit)
- P** Fillister head screw M5 x 18 mm (2x, not supplied with the retrofit kit)

2. Preparations

	TIS No.
Conduct a brief test	---
Disconnect the negative pole of the battery	12 00 ...
The following components must be removed first of all	
Glove box insert	---
Audio system controller (ASK) or	65 12 200
Car Communication Computer (CCC)	65 83 010

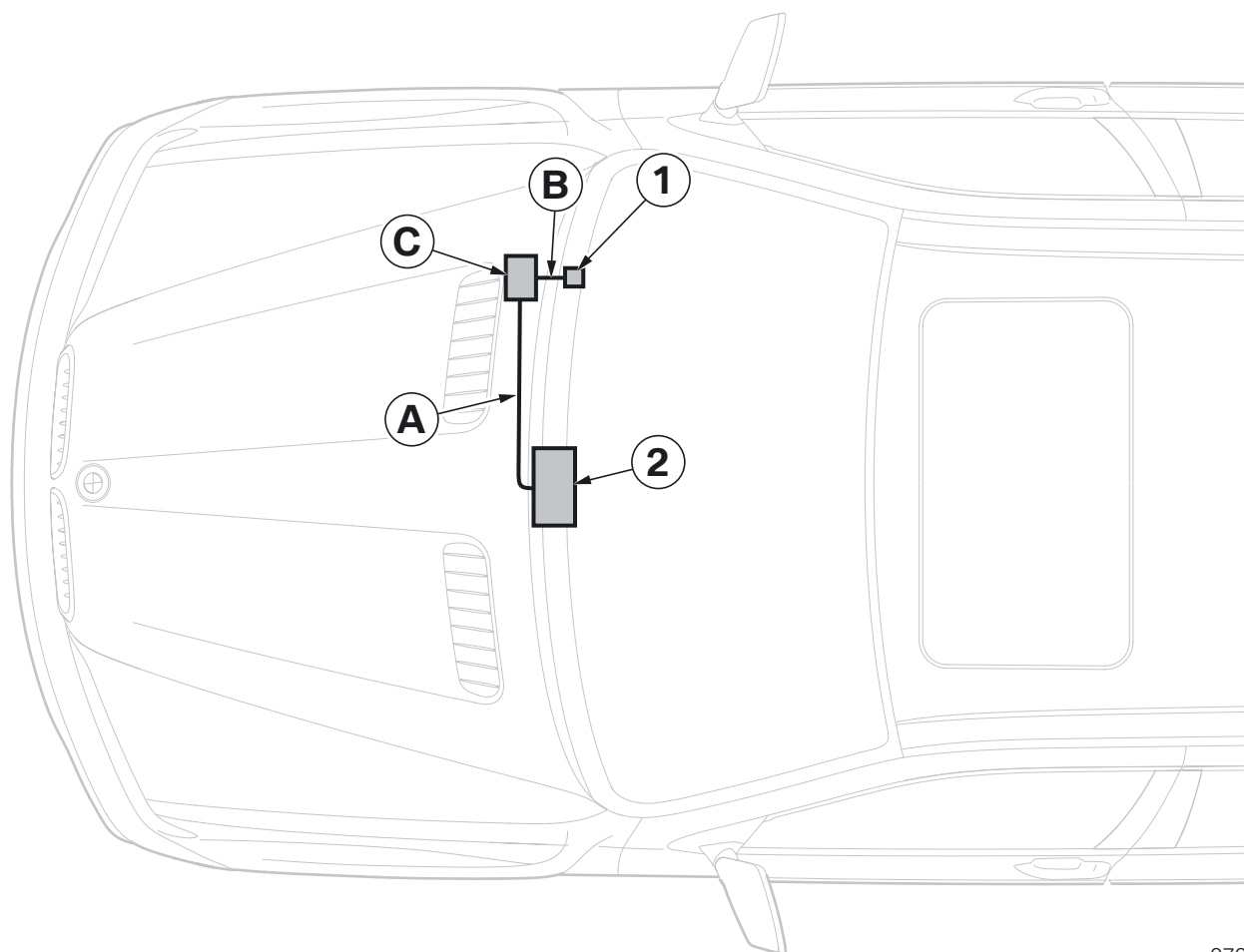
3. Connection diagram



061 0356 Z

Branch/ Item	Designation	Signal	Cable colour / Cross-section	Connection location in car	Abbreviation / Slot
A	Cable kit	---	---	---	---
A1	Socket contact	Terminal 30g	RT 2.5 mm ²	To ASK or CCC	X13812 PIN 15
A2	Socket contact	Terminal 31	BR 2.5 mm ²	To ASK or CCC	X13812 PIN 12
A3	Black 4-pin plug casing	---	---	To socket casing I	---
A4	Fibre optic cable	MOST	GN	To ASK or CCC	X13815 PIN 2
A5	Fibre optic cable connector	MOST	GN	To disconnected fibre optic cable from ASK or CCC	---
A6	4+2-pin SW socket casing	---	---	To interface C	---
B	iPod connection cable	---	---	---	---
B1	Black 12-pin socket casing	---	---	To interface C	---
B2	iPod connection plug	---	---	On iPod	---
I	Black 4-pin socket casing	---	---	With the disconnected cables from the ASK or CCC to branch A3	---

4. Installation and cabling diagram

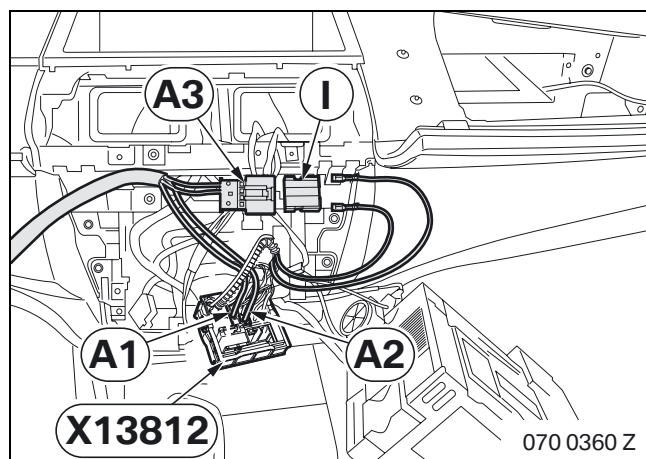


070 0355 Z

Legend

- A** Cable kit
- B** iPod connection cable
- C** Interface
- 1** iPod connection plug **B2**
- 2** ASK or CCC, plugs **X13812** and **X13815**

5. Connecting the wiring harness



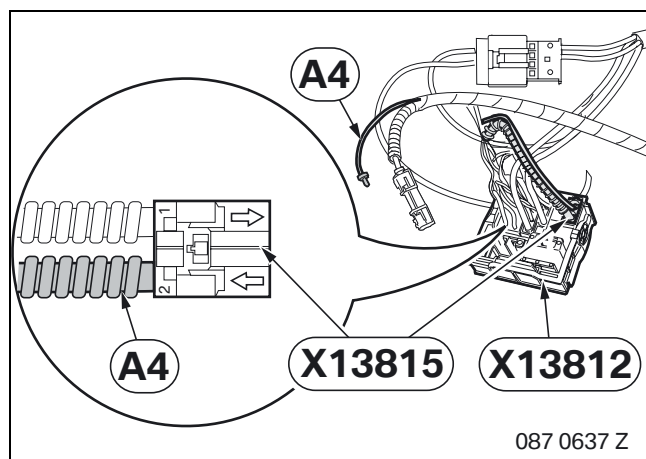
Disconnect the following cables from plug **X13812** (16-pin SW) of the ASK or CCC and connect them to socket casing **I**:

- Red cable from PIN 15 into socket casing **I** PIN 1
- Brown cable from PIN 12 into socket casing **I** PIN 2

Connect branches **A1** and **A2** to plug **X13812** as follows:

- Branch **A1**, RT cable, to PIN 15
- Branch **A2**, brown cable, to PIN 12

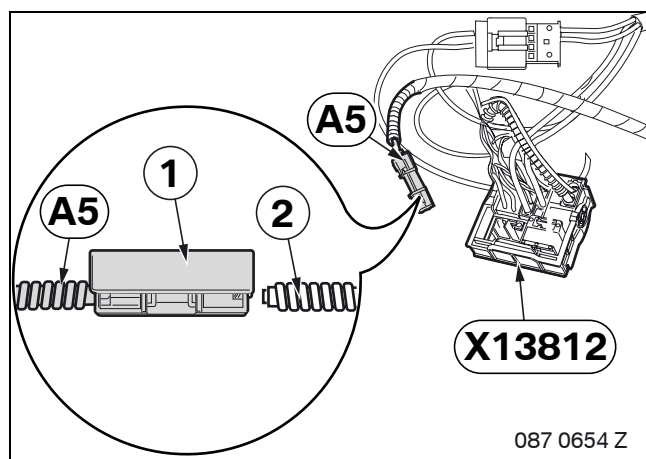
Connect branch **A3** to socket casing **I**.



Unclip fibre optic cable casing **X13815** (2-pin SW) from plug **X13812** (16-pin SW) on the ASK or CCC.

Disconnect the outgoing fibre optic cable from fibre optic cable casing **X13815**, PIN 2 and connect branch **A4**.

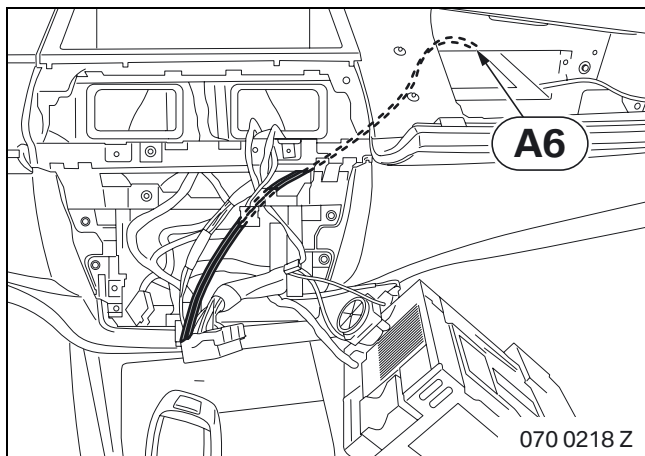
Clip fibre optic cable casing **X13815** to plug **X13812**.



Release the fibre optic cable connector (1) on branch **A5** and connect the disconnected fibre optic cable (2).

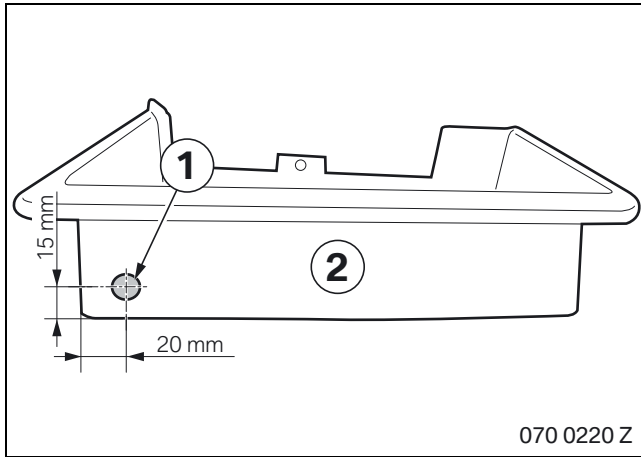
Connect plug **X13812** (16-pin SW) to ASK or CCC.

5. Connecting the wiring harness

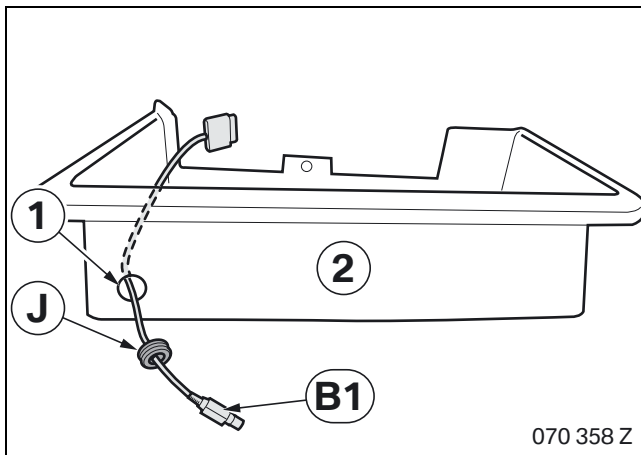


Route branch **A6** to the glove box.

6. Installing the iPod connection cable

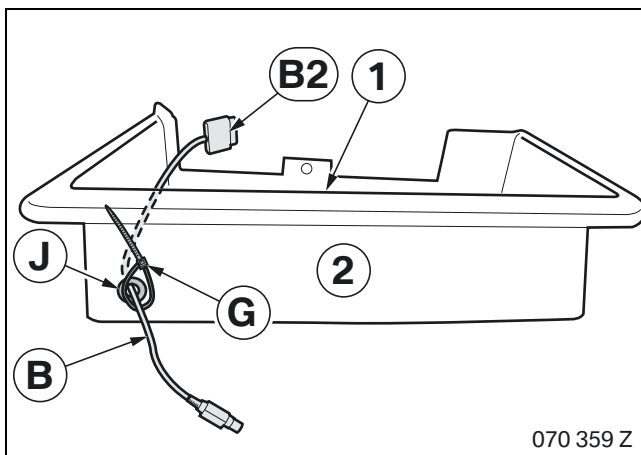


Mark the hole (1) on the upper glove box insert (2) and drill the hole using a 18 mm step drill.



Route branch **B1** through the hole (1) in the glove box insert (2).

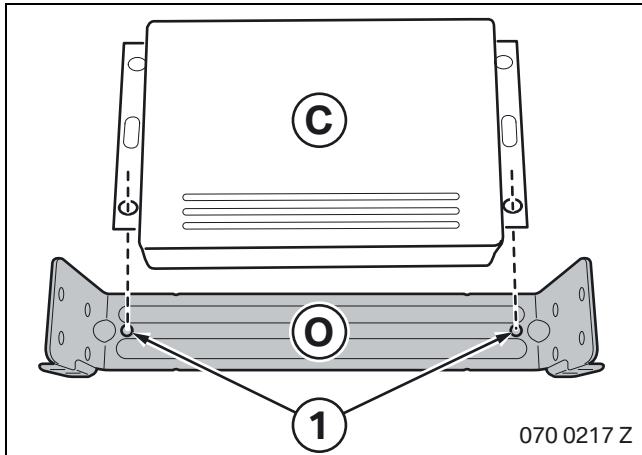
Push grommet **J** onto branch **B1** and insert it into the hole (1)



Pull branch **B2** through grommet **J** until it just projects over the top edge (1) of the glove box insert (2)

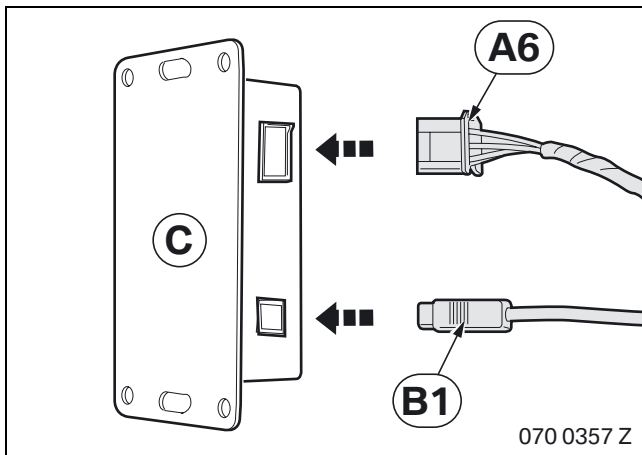
Use cable tie **G** directly in front of grommet **J** secure iPod connection cable **B** to the outside of the glove box insert (2) to act as strain relief.

7. Installing and connecting the interface

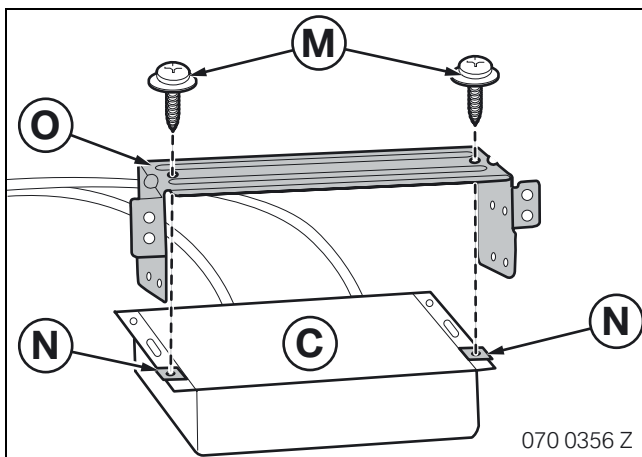


Place interface **C** on the holder of the CD changer **O** in such a way that the holes (1) are central to the holder of the CD changer **O**.

Mark the holes (1) and use a 5 mm twist drill bit to drill them.

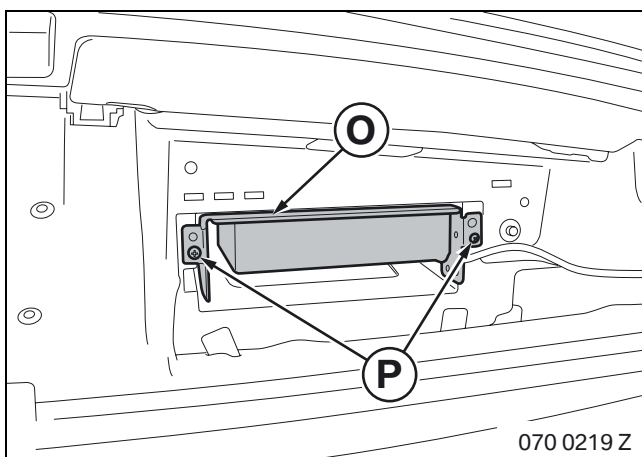


Connect branches **A6** and **B1** to interface **C**.



Push the speed nuts **N** onto the interface **C**.

Use self-tapping screws **M** to secure CD changer holder **F** to the interface **C**.



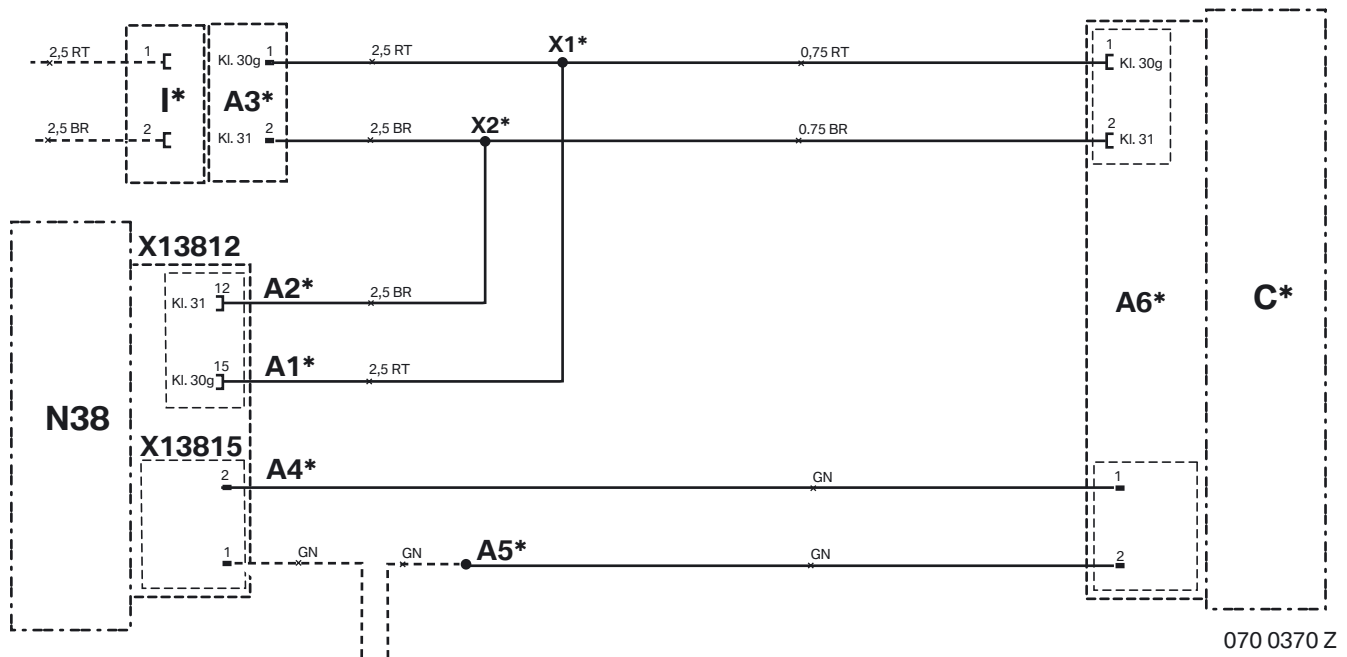
Screw the CD changer holder **O** using fillister head screws **P** into the CD changer slot in the glove box.

8. Concluding work and coding

This retrofit system requires coding.

- Connect the battery
- Encode/Program the retrofit with SSS (software service station) via the **Retrofit** path
- Conduct a brief test
- Conduct a function test
- Re-fit the car components as required

9. Circuit diagram



Legend

- | | |
|---------------|--------------------------------------|
| A1* | Socket contact |
| A2* | Socket contact |
| A3* | Black 4-pin plug casing |
| A4* | Fibre optic cable |
| A5* | Fibre optic cable connector |
| A6* | 4+2-pin SW socket casing |
| C* | Interface |
| I* | Black 4-pin socket casing |
| N38 | ASK or CCC |
| X1* | Terminal 30 connector |
| X2* | Terminal 31 connector |
| X13812 | Black 16-pin socket casing |
| X13815 | Black 2-pin fibre optic cable casing |

All the designations marked with an asterisk (*) apply only to these installation instructions or this circuit diagram.

Cable colours

BR	Brown	RT	Red
GN	Green	SW	Black